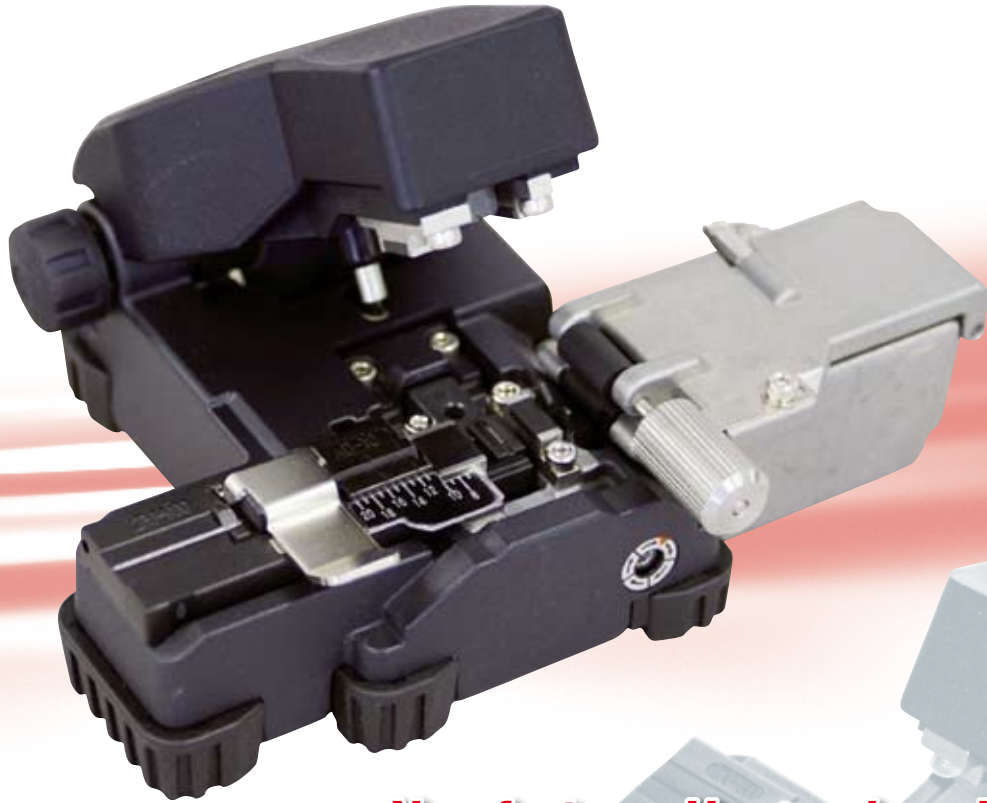


High Precision Single Fiber Cleaver

# CT-10series



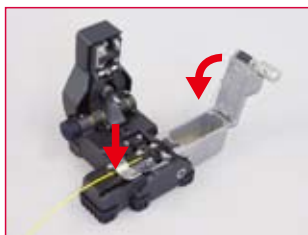
## ***New feature : User replaceable blade.***

Cleavers no longer have to be sent to a Fujikura authorized distributors for blade replacement!

### Features

- Dedicated for single fiber cleaving.
- User replaceable flat diamond blade.
- Simple & single-step operation.
- Blade life up to 64,000 cleaves.
- Compact and light weight.
- Detachable fiber scrap collector FC-03 available as option.

1. Set



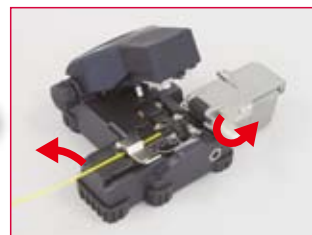
Set fiber on CT-10

2. Cleave



Push top cover to cleave fiber

3. Finish



Turn knob to push fiber scrap into collector and remove the cleaved fiber.

## SPECIFICATION

Description	CT-10	CT-10-FC	CT-10A	CT-10A-FC	CT-10B	CT-10B-FC
Applicable Fiber	Conventional silica optical fiber					
Fiber Count	Single fiber					
Bare Fiber diameter	125 μm					
Fiber placing	Fiber holder		Fiber plate AD-10		Fiber plate AD-30B	
Coating Diameter	250 to 900 μm					
Cleave length	10 mm		6 to 20 mm (coating dia. = 250 μm) 8 to 20 mm (coating dia. > 250 μm)		16 mm	
Cleave angle	Typically 0.5 degrees (single mode fiber)					
Blade replacement	User replaceable					
Blade life	64,000 fibers (4,000 fibers x 16 positions) With fiber holder FH-50/60 series : 48,000 fibers (4,000 fibers x 12 positions)					
Dimensions	115 (W) x 88 (D) x 48 (H) mm with FC-03					
Weight	295 g (with fiber plate and FC-03)					

## STANDARD PACKAGE

Description	Model No.	CT-10	CT-10-FC	CT-10A	CT-10A-FC	CT-10B	CT-10B-FC
Main body	CT-10	1pc.	1pc.	1pc.	1pc.	1pc.	1pc.
Fiber plate	AD-10	-	-	1pc.	1pc.	-	-
	AD-30B	-	-	-	-	1pc.	1pc.
Fiber scrap Collector	FC-03	-	1pc.	-	1pc.	-	1pc.
Carrying case	CC-25	1pc.	1pc.	1pc.	1pc.	1pc.	1pc.
Hexagon wrench	-	1pc.	1pc.	1pc.	1pc.	1pc.	1pc.
Instruction manual	M-CT10-E	1pc.	1pc.	1pc.	1pc.	1pc.	1pc.

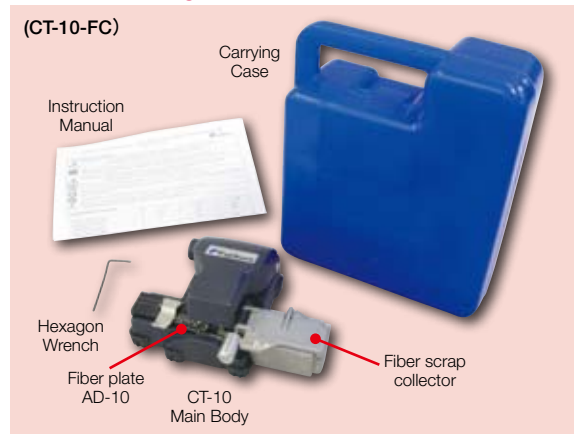
## OPTIONAL ITEMS

No.	Description	Model No.	Note
1	Fiber plate	AD-10	Cleave length : 6 to 20 mm (coating diameter = 250 μm) 8 to 20 mm (coating diameter > 250 μm)
		AD-30B	Cleave length : 16 mm fixed at 250 to 900 μm coating diameter
2	Fiber scrap collector	FC-03	Detachable
3	Blade	CB-02	User replaceable flat diamond blade

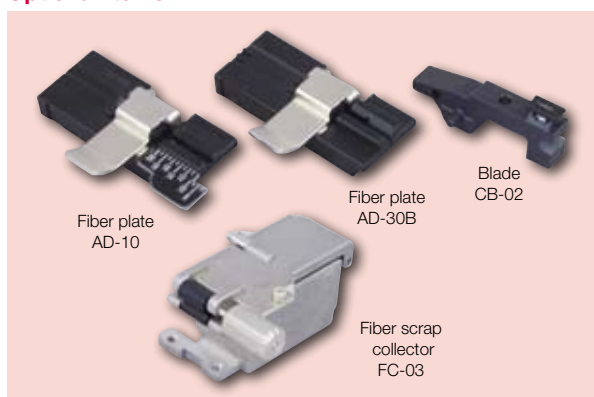
## FIBER HOLDERS

Description	Model No.
Applicable fiber holder	FH-40-250 to 900 FH-50-250 / FH-50-900 FH-60-250 / FH-60-900

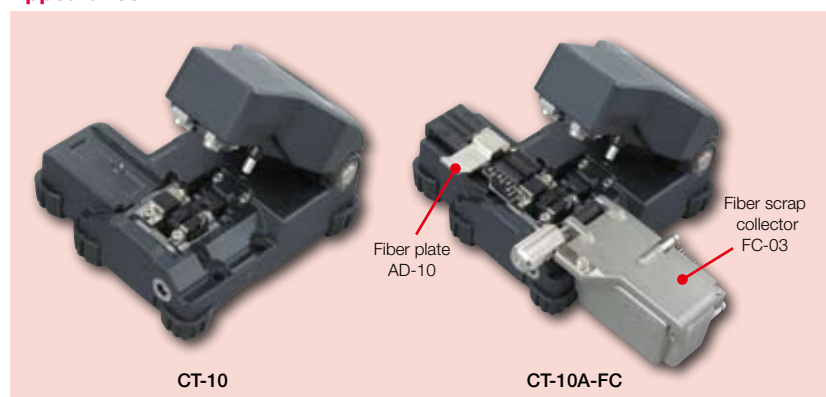
## Standard Package



## Optional Items



## Appearance



Specifications and descriptions are subject to change without prior notice.

# Fujikura Ltd.

1-5-1, Kiba, Koto-ku, Tokyo 135-8512, Japan  
Phone : +81-3-5606-1164 Fax : +81-3-5606-1534 <http://www.fujikura.co.jp>

# Fujikura Asia Ltd.

460, Alexandra Road, #22-02 PSA Bldg., Singapore 119963  
Phone : +65-6-271-1312 Fax : +65-6-278-0965 <http://www.fujikura.co.sg>

# Fujikura Europe Ltd.

C51 Barwell Business Park, Leatherhead Road, Chessington, Surrey KT9 2NY, UK  
Phone : +44-20-8240-2000 Fax : +44-20-8240-2010 <http://www.fujikura.co.uk>

# AFL Telecommunications

260, Parkway East, Duncan, SC29334, USA  
Phone : +1-800-235-3423 Fax : +1-800-926-0007 <http://www.afttele.com>