

OFS-100/-200

Optical results analysis & cable acceptance report generation software



Key Features

OFS-100

- OTDR, CD, PMD, AP, ORL and OSA results analysis
- Batch processing capability via an automation process
- Pass/Fail function
- Customized printouts

OFS-200

- Complete fiber characterization reporting capability including bi-directional OTDR, CD, PMD, AP, IL and ORL results
- Advanced OTDR functions for loop back and mid-point management
- Powerful report preview for error free printout
- Direct access keys for easy process and efficiency

Process OTDR, PMD, CD, DWDM measurements in the office

Developed by JDSU, the leading provider of fiber optic network testing solutions, OFS-100 Optical Fiber Trace Software is an intuitive Windows-based software package for post-processing of optical time domain reflectometer (OTDR), polarization Mode dispersion (PMD), chromatic dispersion (CD), optical spectrum analysis (OSA) and optical return loss (ORL) measurements in an office environment. JDSU OFS-100 Optical Fiber Trace Software enables fast and efficient post-analysis of the test results carried out in the field. It allows results documentation and customization for report generation

Generate cable acceptance reports in record time

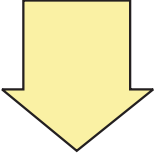
OFS-200 Optical FiberCable Software is an intuitive Windows-based software package for the analysis, presentation and storage of large volumes of optical test data in an office environment.

It allows users to generate detailed, professional and comprehensive cable acceptance reports in less than a third of the time required using existing methods.

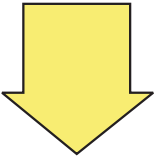
By using JDSU's OFS-200 Optical Fiber Cable Software, OTDR, CD, PMD, insertion loss (IL), attenuation profile (AP) and ORL data collected in the field can be simply downloaded to a PC. Processing can then take place at a time convenient to office schedules and the instruments made available immediately for further fieldwork.

2

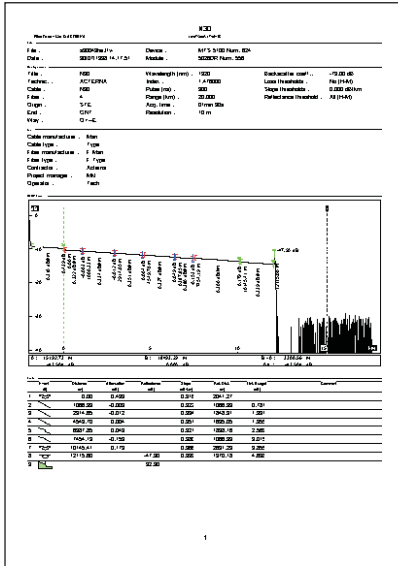
Save series of actions



Associate multiple files



Process associated files with a series of actions
Macro process



Trace report printout

OFS-100 FiberTrace

All-in-One optical results post processing solution

The OFS-100 is a fully integrated single PC software to analyze OTDR, CD, PMD, OSA and ORL results with a unique user interface.

Complete and detailed measurement capability

From automatic to manual measurements, the OTDR function allows in depth OTDR traces analysis, bi-directional analysis and multiple trace management with automatic template generation. CD, PMD and OSA measurement parameters can also be refined for further analysis.

Customized batch processing function to improve productivity

The Macro function allows automatic routine tasks to be programmed in order to perform repetitive, simple or complex actions on a batch of files. Any of the actions can be saved into a sequence and be applied to a series of files. Modifying, saving and printing a batch of files become a matter of a key press.

Documenting and generating professional reports

The JDSU OFS-100 software allows customization of the field results with additional comments, color coding and project management information. Corresponding results can be printed in a user configurable format in order to match the end user requirements.

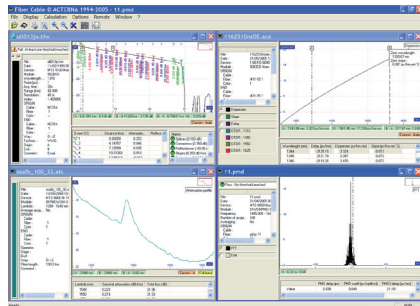


Figure 1: FiberTrace: all-in-one solution

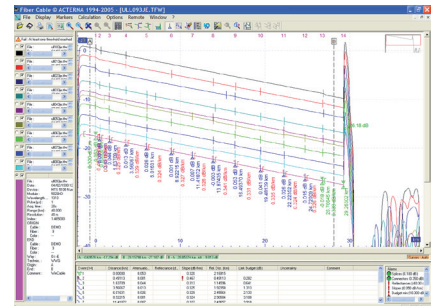


Figure 2: Multi trace analysis for automatic template generation

3

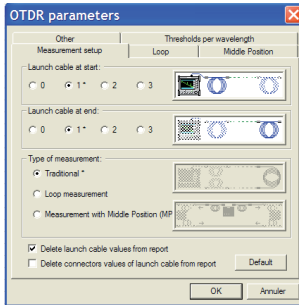


Figure 3: OFS-200 FiberCable: OTDR report parameter setup

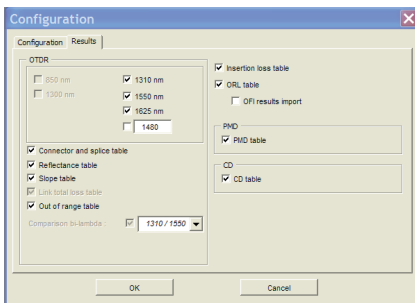


Figure 4: OFS-200 FiberCable report format configuration

OFS-200 FiberCable

Complete optical fiber characterization report solution

FiberCable simultaneously automates processing operations of all your test data on an unlimited number of fibers. Bi-directional OTDR, IL, ORL, PMD and CD results are compiled into a single spreadsheet format report (Excel™ compatible), thus providing unique and immediate access to all these measurements.

Advanced OTDR function management

In addition to conventional bi-directional OTDR trace management, FiberCable offers advanced and powerful functions with loop back and mid-point measurement capability.

Error free cable report generation

Acceptance report generation is still a tedious process with a high risk of operating errors. Time is important but what about risk management and quality reporting to the end customer? This question has been addressed by FiberCable thanks to an «on-line» measurement status combined with a permanent out of range values information report. The unique «Report Preview» function offers an ultimate checkpoint before generating the final document ... error free!

Save time and cost while leveraging your reporting performance

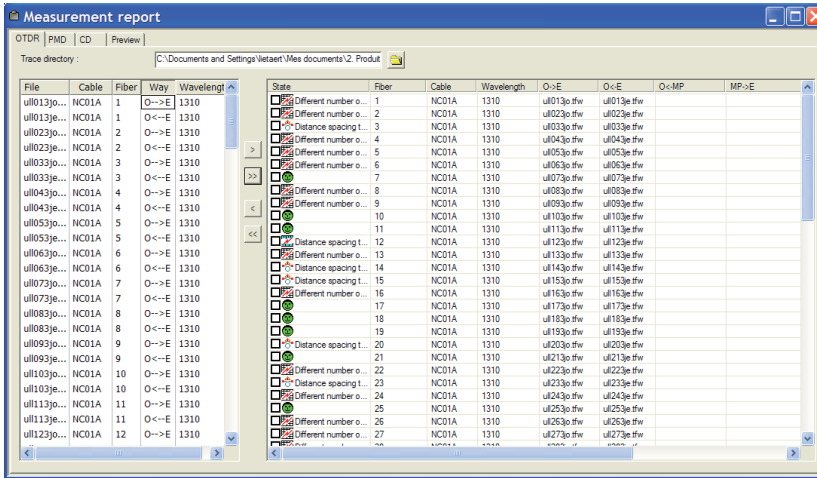
With its intuitive user interface and simple operating steps, FiberCable is the ideal tool to minimize the processing time and the risk of error generation.

Whatever the number of fibers to process, FiberCable provides error free reports in less time than any existing solutions. Direct access to bi-directional OTDR, CD and PMD traces, batch printout while generating the spreadsheet report, allows additional optimization of working time.

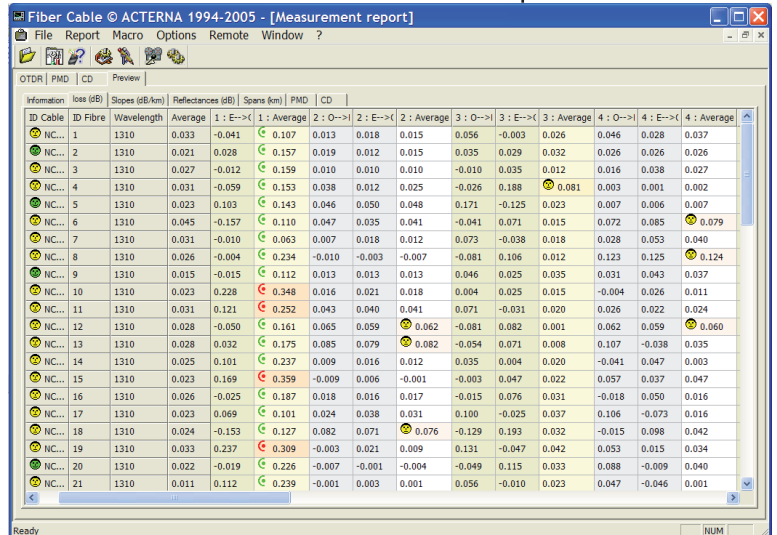
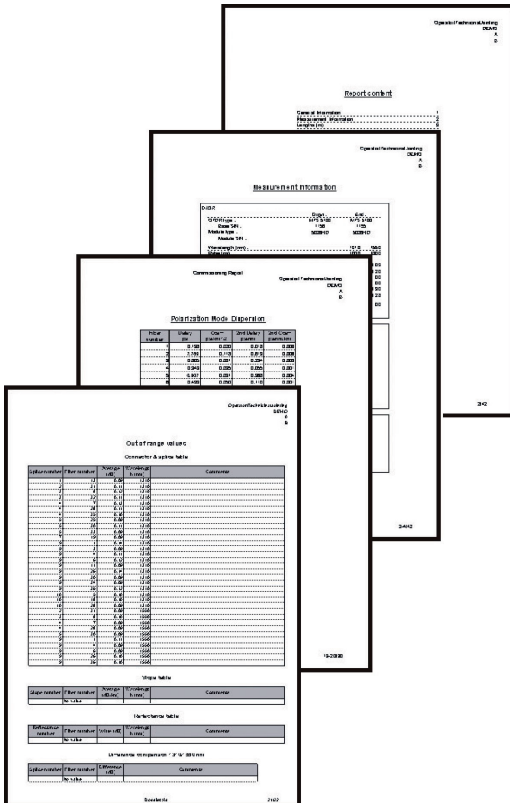
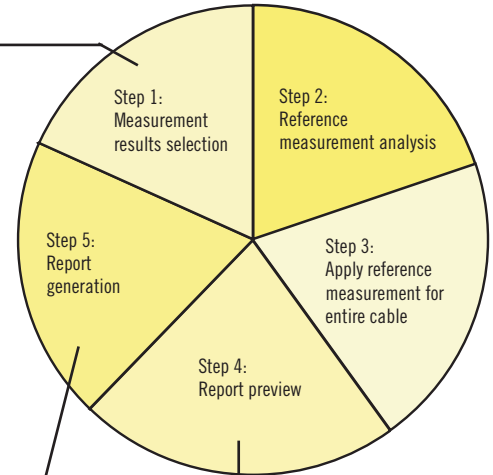
Comprehensive, detailed and professional report generation

In a single-step, FiberCable compiles all the data into a professional document. The report includes events, fibers and cable statistics, providing an out-of-range values summary and multiple-wavelength comparison pinpoints fiber constraints or micro-bends. In addition to the pre-defined spreadsheet format (standard and compact spreadsheets), the software flexibility allows report customization to better match the end customer requirements.

OFS-200 complete cable report generation solution: detailed, professional and error free!

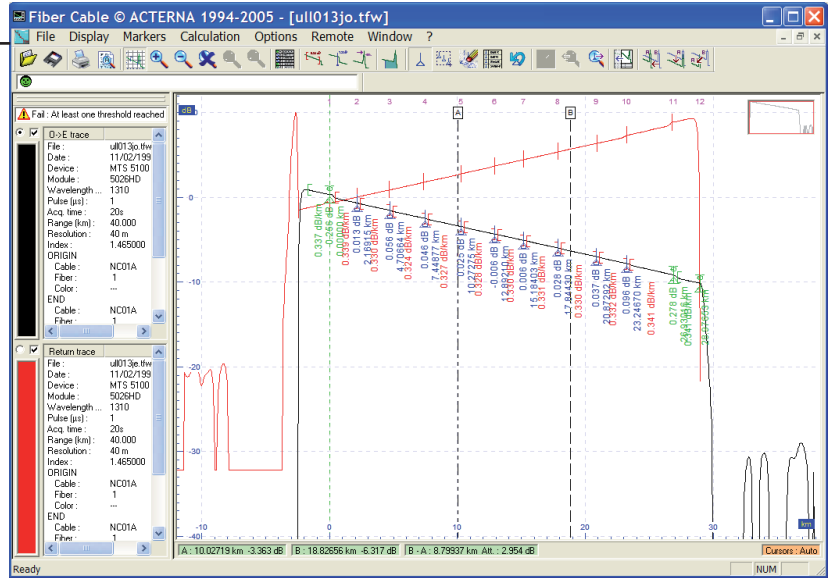
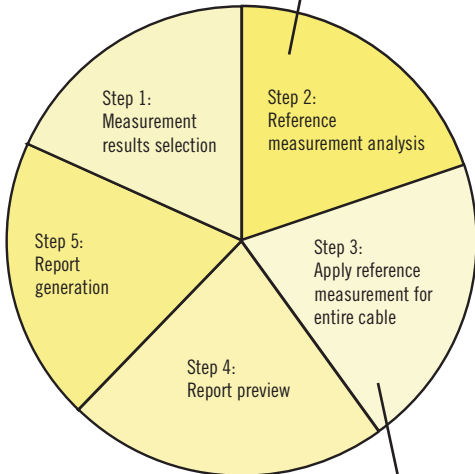


Step 1: Bi-directional OTDR analysis status



Step 4: Incorrect, missing and out-of-range results pointed out

Step 5: Complete and professional measurement report document



Step 2: Events positioning and out-of-range values information

Fiber Cable © ACTERNA 1994-2005 - [Measurement report]

File Report Macro Options Remote Window ?

OTDR | PMD | CD | Preview

Trace directory: C:\Documents and Settings\lvetze\My documents\2_Product

File	Cable	Fiber	Way	Wavelength	State	Fiber	Cable	Wavelength	O->E	O<-E	O<-MP	MP->E
ull1013jo...	NCD1A	1	O->E	1310	✓	1	NCD1A	1310	ull013jo.tfw	ull013jo.tfw		
ull1013je...	NCD1A	1	O<-E	1310	✓	2	NCD1A	1310	ull023jo.tfw	ull023jo.tfw		
ull1023jo...	NCD1A	2	O->E	1310	✓	3	NCD1A	1310	ull033jo.tfw	ull033jo.tfw		
ull1023je...	NCD1A	2	O<-E	1310	✓	4	NCD1A	1310	ull043jo.tfw	ull043jo.tfw		
ull1033jo...	NCD1A	3	O->E	1310	✓	5	NCD1A	1310	ull053jo.tfw	ull053jo.tfw		
ull1033je...	NCD1A	3	O<-E	1310	✓	6	NCD1A	1310	ull063jo.tfw	ull063jo.tfw		
ull1043jo...	NCD1A	4	O->E	1310	✓	7	NCD1A	1310	ull073jo.tfw	ull073jo.tfw		
ull1043je...	NCD1A	4	O<-E	1310	✓	8	NCD1A	1310	ull083jo.tfw	ull083jo.tfw		
ull1053jo...	NCD1A	5	O->E	1310	✓	9	NCD1A	1310	ull093jo.tfw	ull093jo.tfw		
ull1053je...	NCD1A	5	O<-E	1310	✓	10	NCD1A	1310	ull103jo.tfw	ull103jo.tfw		
ull1063jo...	NCD1A	6	O->E	1310	✓	11	NCD1A	1310	ull113jo.tfw	ull113jo.tfw		
ull1063je...	NCD1A	6	O<-E	1310	✓	12	NCD1A	1310	ull123jo.tfw	ull123jo.tfw		
ull1073jo...	NCD1A	7	O->E	1310	✓	13	NCD1A	1310	ull133jo.tfw	ull133jo.tfw		
ull1073je...	NCD1A	7	O<-E	1310	✓	14	NCD1A	1310	ull143jo.tfw	ull143jo.tfw		
ull1083jo...	NCD1A	8	O->E	1310	✓	15	NCD1A	1310	ull153jo.tfw	ull153jo.tfw		
ull1083je...	NCD1A	8	O<-E	1310	✓	16	NCD1A	1310	ull163jo.tfw	ull163jo.tfw		
ull1093jo...	NCD1A	9	O->E	1310	✓	17	NCD1A	1310	ull173jo.tfw	ull173jo.tfw		
ull1093je...	NCD1A	9	O<-E	1310	✓	18	NCD1A	1310	ull183jo.tfw	ull183jo.tfw		
ull1103jo...	NCD1A	10	O->E	1310	✓	19	NCD1A	1310	ull193jo.tfw	ull193jo.tfw		
ull1103je...	NCD1A	10	O<-E	1310	✓	20	NCD1A	1310	ull203jo.tfw	ull203jo.tfw		
ull1113jo...	NCD1A	11	O->E	1310	✓	21	NCD1A	1310	ull213jo.tfw	ull213jo.tfw		
ull1113je...	NCD1A	11	O<-E	1310	✓	22	NCD1A	1310	ull223jo.tfw	ull223jo.tfw		
ull1123jo...	NCD1A	12	O->E	1310	✓	23	NCD1A	1310	ull233jo.tfw	ull233jo.tfw		
ull1123je...	NCD1A	12	O<-E	1310	✓	24	NCD1A	1310	ull243jo.tfw	ull243jo.tfw		
ull1133jo...	NCD1A	13	O->E	1310	✓	25	NCD1A	1310	ull253jo.tfw	ull253jo.tfw		
					✓	26	NCD1A	1310	ull263jo.tfw	ull263jo.tfw		
					✓	27	NCD1A	1310	ull273jo.tfw	ull273jo.tfw		
					✓	28	NCD1A	1310	ull283jo.tfw	ull283jo.tfw		
					✓	29	NCD1A	1310	ull293jo.tfw	ull293jo.tfw		

Ready

Step 3: Bi-directional OTDR analysis status update

Features, applications and benefits

OFS-100 Optical FiberTrace

Remote control and file transfer via RS232 or Ethernet	Direct access to the MTS for fast file transfer
OTDR Bellcore/Telcordia Trace format compatible	Complies with GR-196-CORE issue 2 OTDR data standard revision 1.0/1.1/2.0
Automatic OTDR traces analysis	Provides splices, connectors, fiber attenuation, fiber end, ghosts and ORL measurement
Multiple-OTDR trace analysis	Limits manual operation with template generating of multiple-trace comparison
Advanced OTDR marker management	Addresses high level of information to each market/events
Detailed PMD and CD analysis	Sets calculation parameters, pre-define thresholds according to bit rate.
Powerful OSA post-processing functions	Sorts results for spectrum comparison, OSNR parameters adjustment etc. ...
Pass/fail function (user-definable alarm thresholds)	Carries out quick checks for immediate problem identification
Can export results into ASCII file format	Compatibility with spreadsheet softwares such as Microsoft Excel™

OFS-200 Optical FiberCable

Includes all the advantages of OFS-100 FiberTrace software	Maintains users ability to analyze any type of optical traces
Automatic bi-directional OTDR trace	Enables a quick association of the traces from both direction
Bi-directional status management (missing events, distance too large...)	Provides quick and flexible problem identification of each pair of traces
Individual or combined OTDR, PMD, IL and ORL report generation	Flexible solution to cover entire measurement results
Step by step report generation	Checks each individual traces while generating the report
Report Preview	Detailed preview of the complete report with alarm information
Out of range alarm on all measurements	Sorts out range values to directly access unacceptable measurements

Specifications

Compatibility with all files generated by the MTS-5000 and MTS-8000 platforms, OFI-2000 and ONT platform OSA data. FiberCable includes all FiberTrace functions.

Report macro : 48 MB or more of memory (128 MB recommended)

A 800 × 600 pixels monitor (1152 × 864 or above recommended)

PC requirements

An IBM Pentium 133MHz PC or 100% compatible computer (PentiumII 233 MHz or above recommended)
 A hard drive and a CD-ROM drive
 16 MB or more of memory (64 MB recommended)
 A mouse pointing device
 Microsoft Windows™ version 95, 98, 2000, NT, or XP
 Microsoft Excel™
 Memory requirements for Microsoft Excel™

Ordering information

OFS100	OFS-100
OFS200	OFS-200

All statements, technical information and recommendations related to the products herein are based upon information believed to be reliable or accurate. However, the accuracy or completeness thereof is not guaranteed, and no responsibility is assumed for any inaccuracies. The user assumes all risks and liability whatsoever in connection with the use of a product or its applications. JDSU reserves the right to change at any time without notice the design, specifications, function, fit or form of its products described herein, including withdrawal at any time of a product offered for sale herein. JDSU makes no representations that the products herein are free from any intellectual property claims of others. Please contact JDSU for more information. JDSU and the JDSU logo are trademarks of JDS Uniphase Corporation. Other trademarks are the property of their respective holders. © 2005 JDS Uniphase Corporation. All rights reserved. 10143185 500 0707 OFS100-200.DS.FOP.TM.AE

Test & Measurement Regional Sales

NORTH AMERICA TEL: 1 866 228 3762 FAX: +1 301 353 9216	LATIN AMERICA TEL:+55 11 5503 3800 FAX:+55 11 5505 1598	ASIA PACIFIC TEL:+852 2892 0990 FAX:+852 2892 0770	EMEA TEL:+49 7121 86 2222 FAX:+49 7121 86 1222	WEBSITE: www.jdsu.com
---	--	---	---	--