



BHA 9220 BROADBAND HORN ANTENNA 0.2 to 2 GHz



The BHA 9220 is a linearly polarised broadband antenna which is ideal for many applications particularly EMC/RF measurements. It can be used for both receiving and transmitting. A precision 'N' connector is used to provide low VSWR and high power handling capability.

The mounting bracket allows adjustment for vertical and horizontal polarisations, and has a standard camera thread (1/4" X 20) hole that allows fitting to many support structures including all Teseq tripods (note Teseq adapters may be required).

The precision design is rugged and corrosion resistant. However, as with any precision instrument, care should be taken when using the BHA 9220.

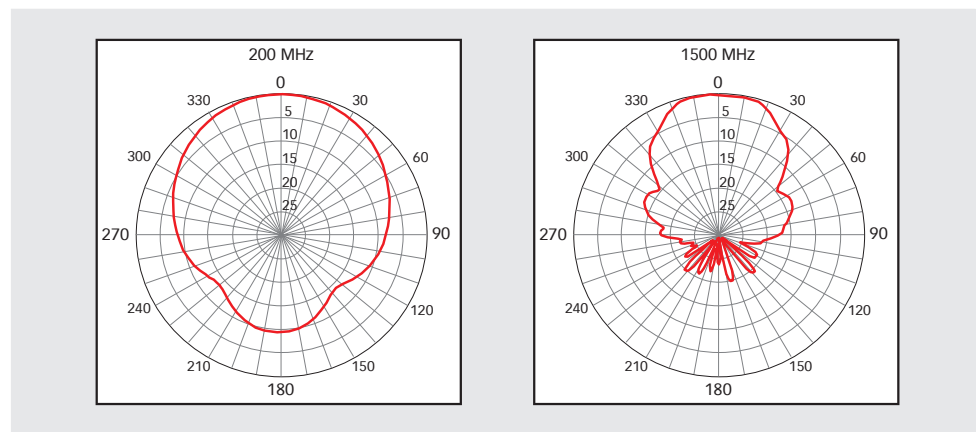
BHA 9220

- Broadband horn antenna
- Frequency range 0.2 to 2 GHz
- Uniform gain
- High power handling
- Low VSWR

Technical specifications

Frequency range:	0.2 to 2 GHz
Typical gain:	5 to 9 dBi
Impedance (nominal):	50 Ω
Maximum continuous power:	200 W
Cross polarisation:	20 dB minimum
Connector:	precision N type female
VSWR:	1.6:1 average
Field strength capability:	250 V/m at 1 m, 50 Ω source, free space conditions
Size antenna (L x H x W in mm):	approx. 980 X 980 X 730
Weight:	approx. 12 kg
Recommended tripods:	BTP 6020A plus adapter CHA 9435 or CTP 6099 plus adapter CHA 9443

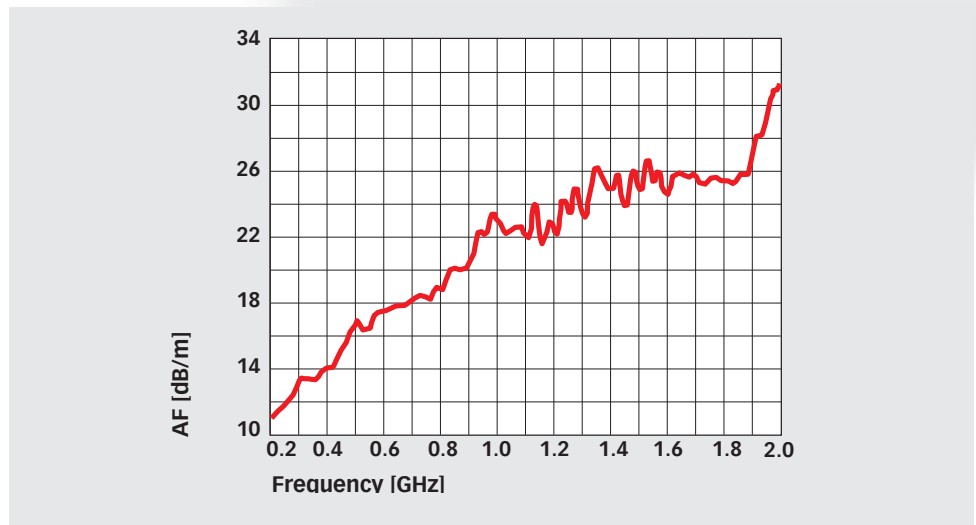
Typical E field polar patterns (horizontal)



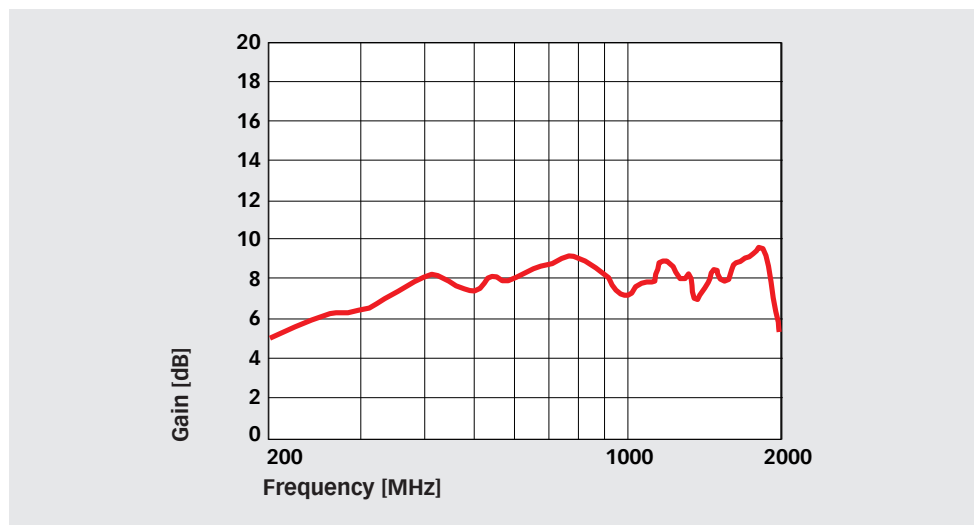
Advanced Test Solutions for EMC

BHA 9220 **BROADBAND HORN ANTENNA 0.2 to 2 GHz**

Typical antenna factor



Typical gain

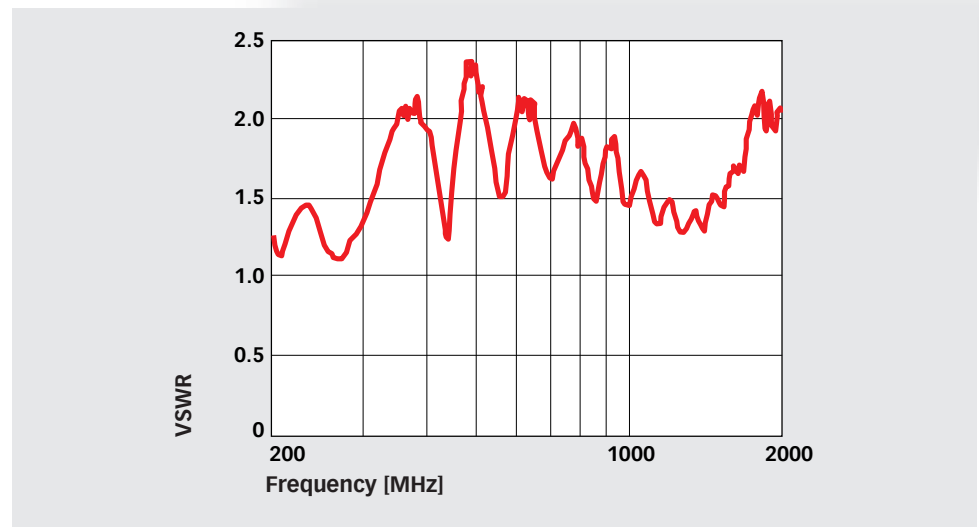




BHA 9220 **BROADBAND HORN ANTENNA 0.2 to 2 GHz**



Typical VSWR



Delivery information

Part number	Description
344-555	BHA 9220 Double ridged horn antenna 0.2 - 2 GHz
97-244570	Ant Cert-TC Traceable calibration (ISO17025), order only with the antenna, free space calibration (horizontal), other calibrations on request
248504	BTP 6020A-0880 EMC Tripod with tube 880 mm and mounting head for antennas with 22 mm tube
248505	BTP 6020A-0680 EMC Tripod with tube 680 mm and mounting head for antennas with 22 mm tube
248523	BTP 6020A-1370 EMC Tripod with tube 1370 mm and mounting head for antennas with 22 mm tube
348-810	CHA 9435 To fit field probes or BHA 9220 onto BTP 6020 (boss fits outside fibreglass pole, 50 mm), fitted with 1/4 " camera thread